



**Century**

21,25x85

8" x 33"

loving nature





# Century

21,25x85

8''x33''

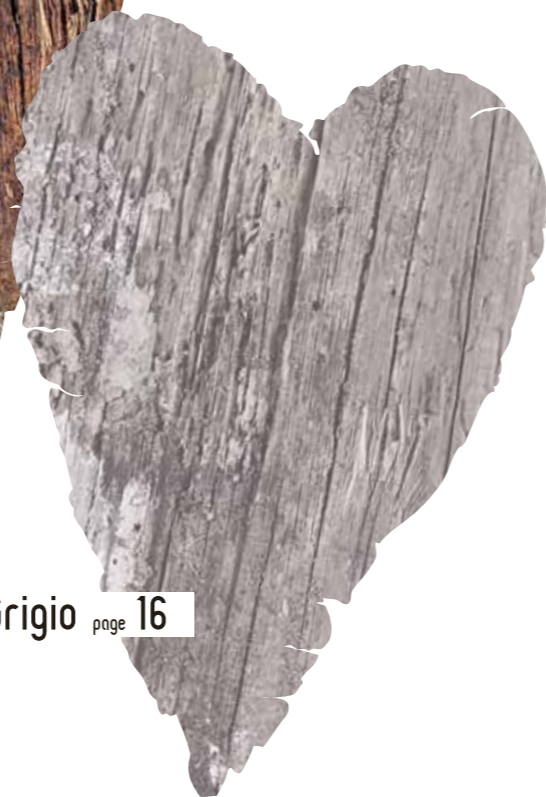
Gres porcellanato smaltato Glazed porcelain stoneware



loving nature



Rosso page 03



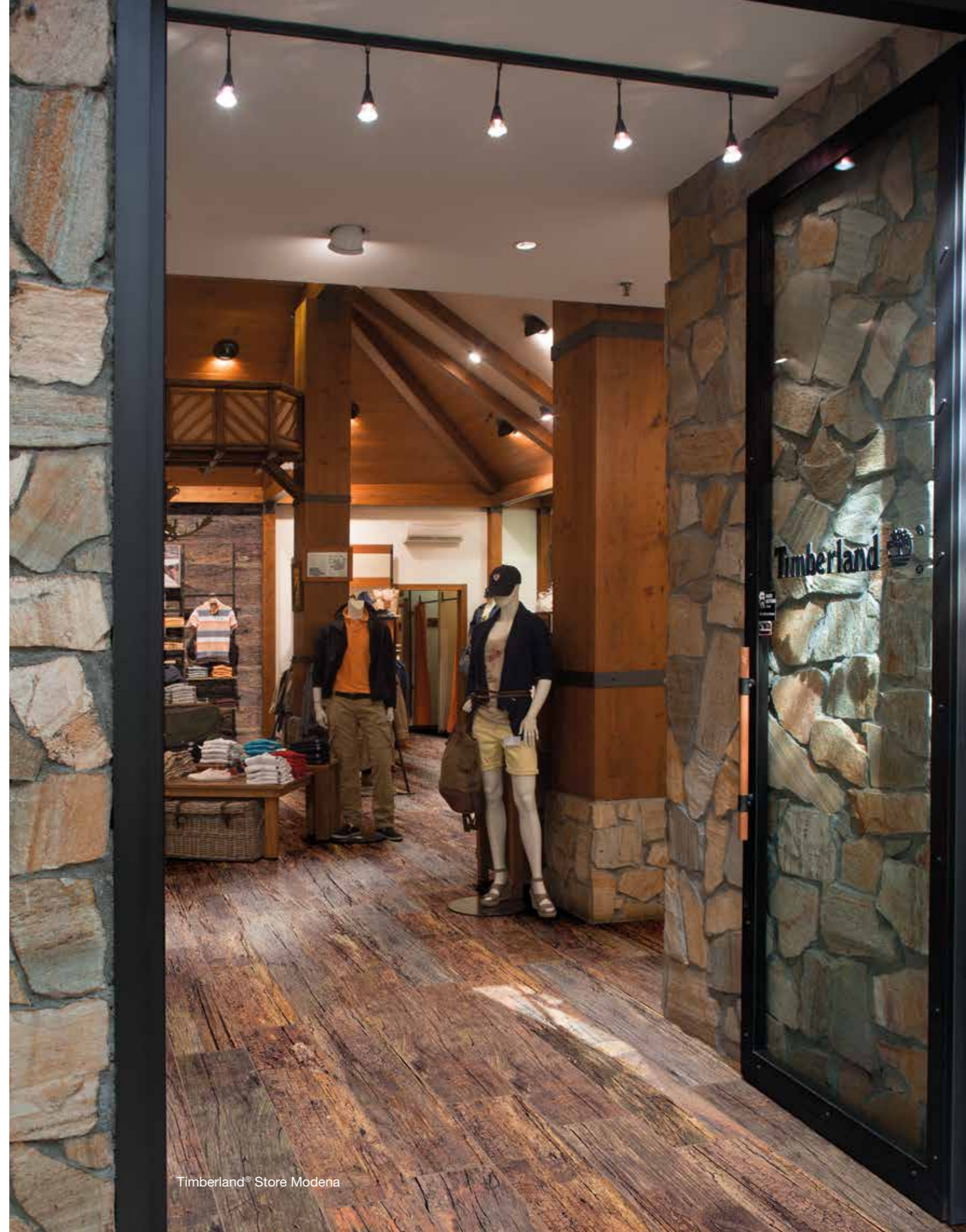
Grigio page 16



Beige page 08



Noce page 12



Century

Rosso 21,25x85





Century

Rosso 21,25x85

Century

Beige 21,25x85





Century

Beige 21,25x85

Century

Noce 21,25x85



Century

Noce 21,25x85







Century

Grigio 21,25x85



Century

Grigio 21,25x85

# Century 21,25x85

8''x33''

**v4** Prodotto con forte variazione cromatica.  
Very high shade and texture variation within each carton



Gres porcellanato smaltato Glazed porcelain stoneware

loving nature

Beige



302805/48 56 ■  
Century Beige PEI IV  
21,25x85 7

Noce



302807/48 56 ■  
Century Noce PEI IV  
21,25x85 7

Rosso



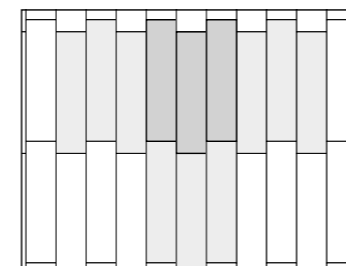
302808/48 56 ■  
Century Rosso PEI IV  
21,25x85 7

Grigio

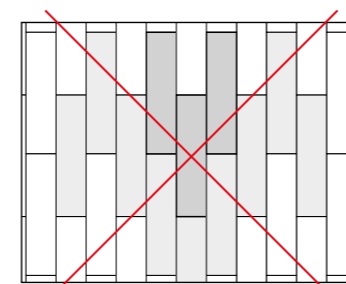


302806/48 56 ■  
Century Grigio PEI IV  
21,25x85 7

## Schemi di posa Laying patterns

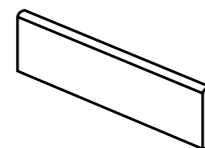


Si consiglia di posare il materiale sfalsato di 1/10 (8,5 cm).  
We recommend laying the material in a 1/10 (8,5 cm) staggered arrangement.

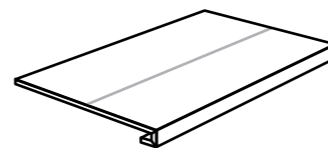


Non è consigliabile posare il materiale sfalsato di 1/2 (42,5 cm).  
We do not recommend laying the material in a 1/2 (42,5 cm) staggered pattern.

## Pezzi speciali / Special trims

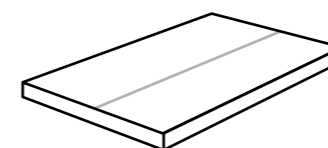


Battiscopa 10x85 6 ■  
800361/11 Century Beige 33 ■  
800363/11 Century Noce 33 ■  
800364/11 Century Rosso 33 ■  
800362/11 Century Grigio 33 ■



\* Gradino Frontale/120 105 ■  
42,5x85 1

\* Disponibili solo su ordinazione  
Available on demande



\* Gradino Angolare DX/186 73 ■  
\* Gradino Angolare SX/186 73 ■  
42,5x85 1

\* Disponibili solo su ordinazione  
Available on demande

pesi e misure / weight and sizes / poids et mesures / Gewichte und Verpackungen							
dimensioni sizes dimensions abmessungen	spessore thickness épaisseur stärke	pz/collo pcs/box pc/boite stk/ktn	mq/collo sqm/box m/boite qm/ktn	kg/collo kg/box kg/boite kg/ktn	colli/europal box/europal boites/europal ktn/europal	mq/europal sqm/europal m/europal qm/europal	kg/europal kg/europal kg/europal kg/europal
Fondo 21,25x85	10 mm	6	1,08	21,70	60	64,80	1320

# Century

21,25x85  
8''x33''

Gres porcellanato smaltato Glazed porcelain stoneware



## caratteristiche tecniche - technical characteristics

UNI EN 14411 BIa Allegato G (ISO 13006)

Caratteristica tecnica Technical feature Caractéristique technique Technische eigenschaft	Norma Norms Norme Norme	Valore richiesto dalle norme Required standards Valeur prescrite par les normes Normvorgabe	CENTURY
<b>Assorbimento d'acqua</b> Water absorption Absorption d'eau Wasseraufnahme	UNI EN ISO 10545-3	≤ 0,5%	≤ 0,5%
<b>Resistenza alla flessione</b> Bending strength Résistance à la flexion Biegefestigkeit	UNI EN ISO 10545-4	≥ 35 N/mm <sup>2</sup>	<b>Conforme</b> Corresponding Conforme Entsprechend
<b>Resistenza al gelo</b> Resistance to frost Résistance aux gel Frostbeständigkeit	UNI EN ISO 10545-12	<b>Nessuna alterazione</b> No alteration Aucune alteration Keine Veränderung	<b>Non gelivo</b> Frost-proof Non gélifs Frostsicher
<b>Caratteristiche di regolarità</b> Regularity characteristics Caractéristiques de régularité Regelmäßigkeit	UNI EN ISO 10545-2	<b>Lunghezza e larghezza</b> / Length and width Longueur et largeur / Länge und breite	± 0,6% max
		<b>Spessore</b> / Thickness Épaisseur / Stärke	± 0,5% max
		<b>Rettilineità spigoli</b> / Straightness of sides Rectitude des arêtes / Kantengeradheit	± 0,5% max
		<b>Ortogonalità</b> / Rectangularity Orthogonalité / Rechtwinkligkeit	± 0,6% max
<b>Planarità</b> / Length and width Longueur et largeur / Ebenflächigkeit		± 0,5% max	<b>Tolleranze minime</b> Low alteration Minime alteration Geringe Veränderung
<b>Resistenza all'abrasione (metodo PEI)</b> Wear resistance (PEI test) Résistance à l'abrasion (méthode PEI) Widerstand gegen Abrieb (nach PEI)	UNI EN ISO 10545-7	Come dichiarato	≥ 3
<b>Resistenza alle macchie</b> Staining resistance Résistance aux taches Widerstand gegen fleckenbildung	UNI EN ISO 10545-14	Min. 3	<b>Conforme</b> Corresponding Conforme Entsprechend
<b>Stabilità dei colori</b> Colours stability Stabilité des couleurs Farbbeständigkeit	DIN 51094	Stabile	<b>Nessuna Variazione</b>
<b>Durezza Superficie Mohs</b> Mohs surface hardness Dureté de la surface (échelle Mohs) Ritzhärte nach Mohs	UNI EN 101	≥ 6	6-8
<b>Resistenza agli sbalzi termici</b> Thermal shock resistance Résistance aux écarts de température Temperaturwechselbeständigkeit	ISO 10545-9	Metodo di prova disponibile Test method available Méthode d'essai disponible Prüfverfahren verfügbar	<b>Resiste</b> Resistant
<b>Resistenza allo scivolamento</b> Slip resistance Résistance au glissement Rutschhemmende Eigenschaft	<b>METODO B.C.R.A.</b> DIN 51130 DIN 51097	D.M.I. Giugno 1989 n. 236 (1 > 0,40) In funzione dell'ambiente o della zona di lavoro Basing on the environment or on the working area In funzione delle zone bagnate soggette a calpestio a piedi scalzi Basing on the wet-loaded barefoot areas	> 0,4



# Century

loving nature

Si ringrazia per la gentile concessione delle locations:

Timberland® Store Modena p. 3, 4/5 - SCANDOLA Mobili srl p. 6 - Stefano Cosatto srl p. 18/19



# Century

loving nature



Via Guidino Superiore 13 Interno 10/1303 Residenza Soleana  
6900 Paradiso - Lugano Svizzera